



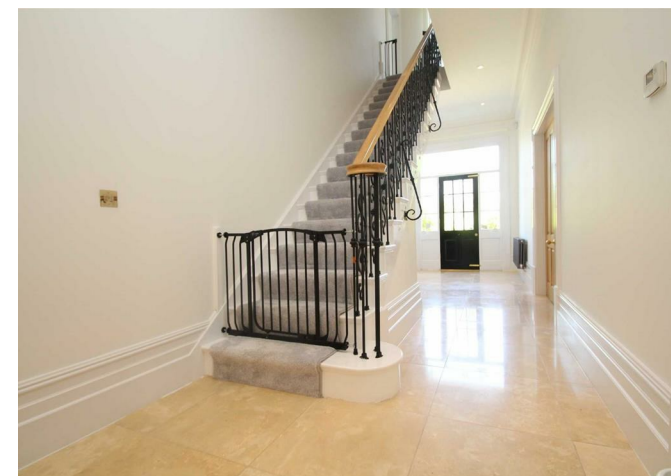
| Theobald Road | Altrincham

 JORDAN FISHWICK  
EXCLUSIVE





£13,000 Per Calendar Month



Theobald Road, BOWDON - Situated in a corner plot on a private road, close to Hale village, the property offers well designed, spacious accommodation spread over three floors, all tastefully presented and decorated. The entrance hall first portrays the elegance with its wide open plan design and double doors opening onto the formal reception rooms. All the rooms benefit from tall Georgian style windows, deep skirting boards and cornice moulding. High quality fittings and materials can be found throughout with state of the art wiring and surround sound facilities to all rooms. The striking kitchen is of great proportions and opens through into an everyday family room with glass roof and french doors opening onto a private courtyard at the rear, there is also a secondary kitchen. The three main reception rooms incorporate, a formal lounge, dining room and family sitting room, whilst the top floor provides a media/ cinema and gym with bathroom off.



- Immaculate interior of the finest quality
- AVAILABLE JULY/AUGUST

- Six bedrooms
- Fabulous location on one of the most sought after roads in Bowdon

- Five reception rooms

